

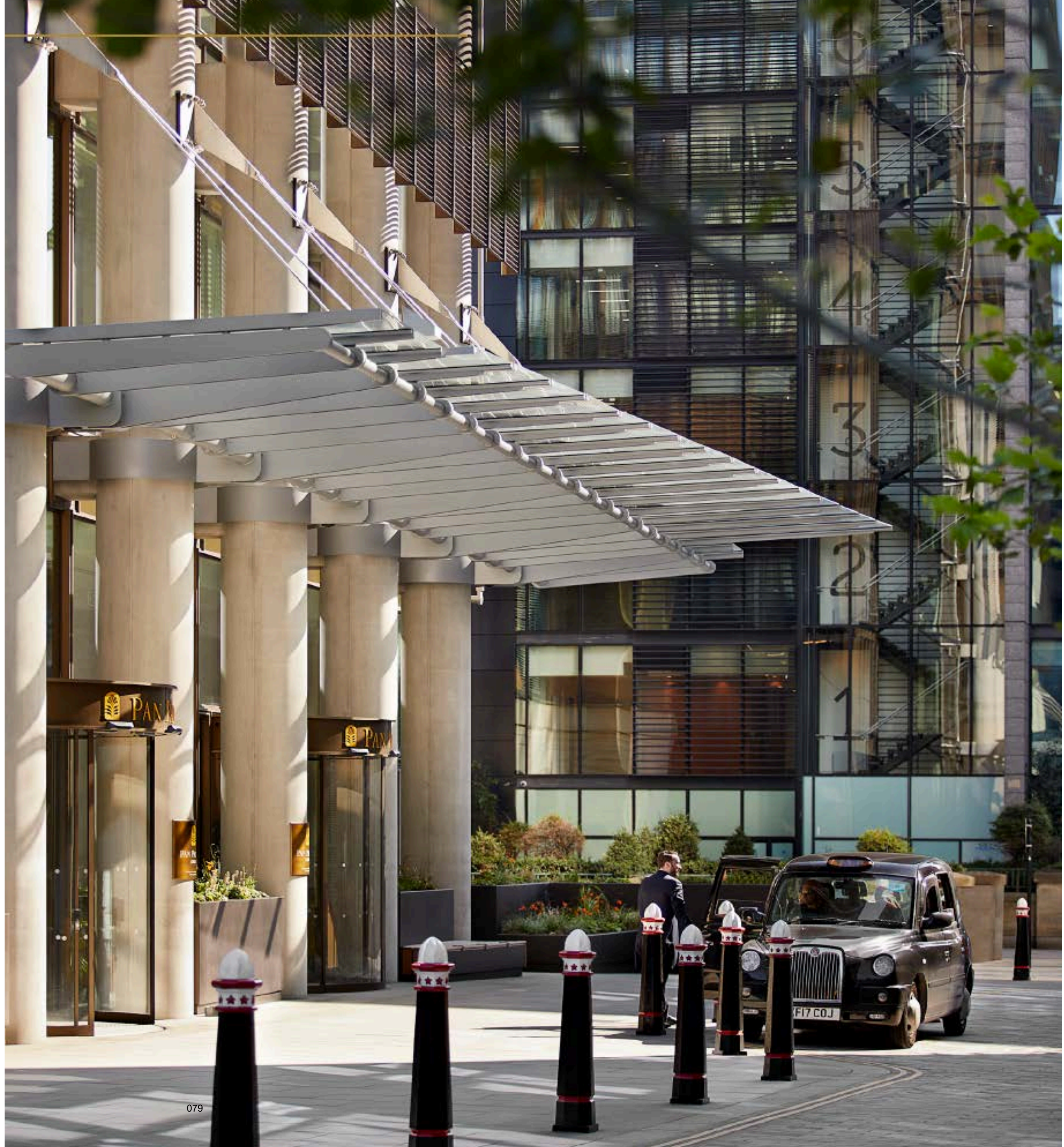


# PAN PACIFIC

Modern Urban  
Retreat

in LONDON

---





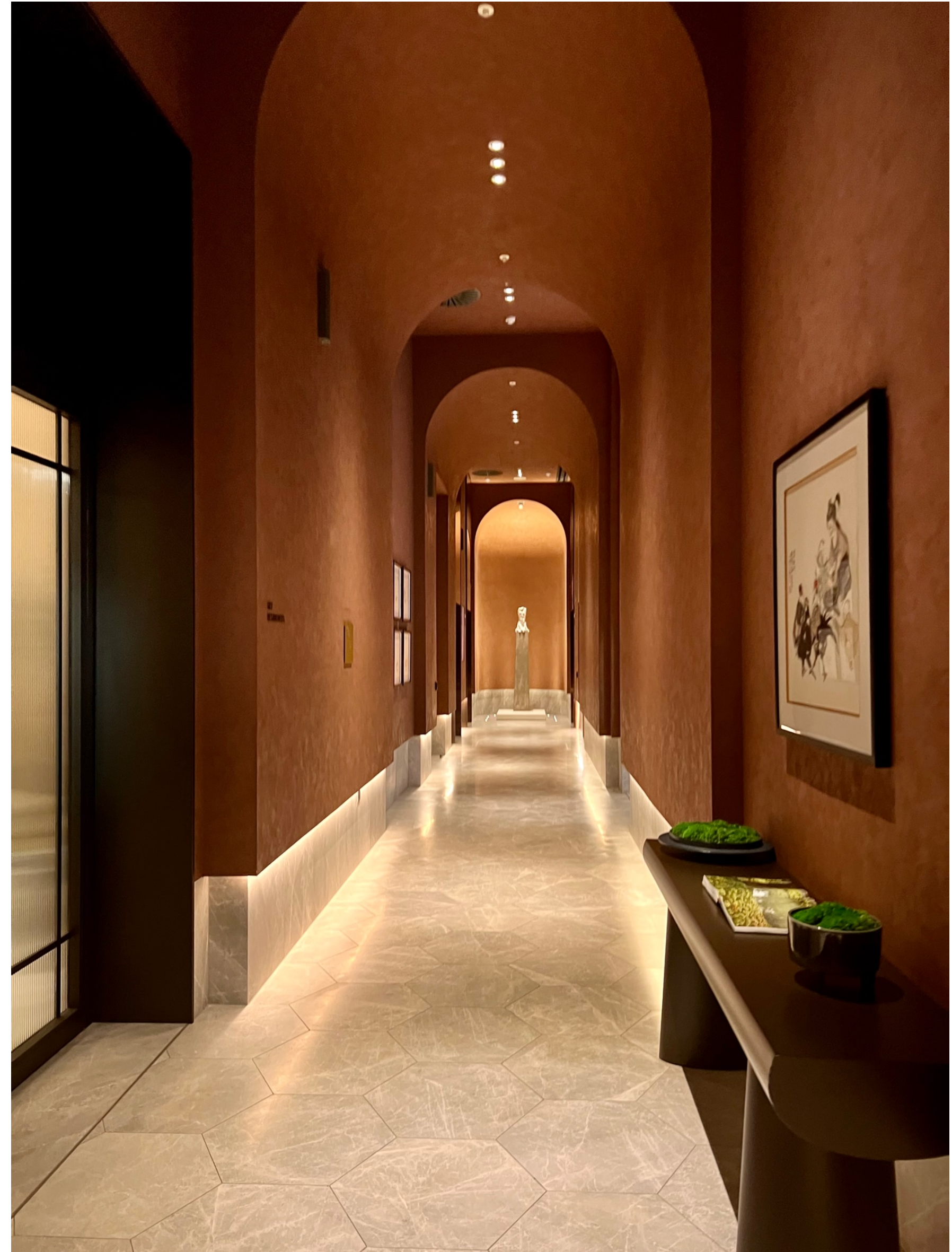
# Asian heritage

”

Our design feeds off the richness and history of London while layering in the contemporary cool and free-spirited energy of South East Asia. “  
GEORGE YABU



PHOTOS: ILONA LEE



# WELL- BEING

”

Tailored to individual needs, our facilities include a signature infinity pool with inspiring views over Bishopsgate Plaza and an interactive gym with cutting-edge equipment, alongside two indulgent treatment rooms, individual relaxation pods, sauna and steam rooms, a unique mindful studio and dedicated drawing room with nutritional dining.

Here, a truly personalized approach to wellbeing is practiced, with everything from treatments to customized exercise routines overseen by our expert team of health professionals who are on hand to help guests achieve their specific goals.



# Asian Artistic Flair & SUSTAINABILITY

Arrive, relax and enjoy tailored modernity with an Asian artistic flair in our spacious rooms or luxuriously elegant suites with butler service. With commanding views across the City of London, everything is designed with your comfort in mind at Pan Pacific London

We are deeply mindful of our ecological footprint and are committed to responsible environmental practices in all areas of the hotel to champion best practice.

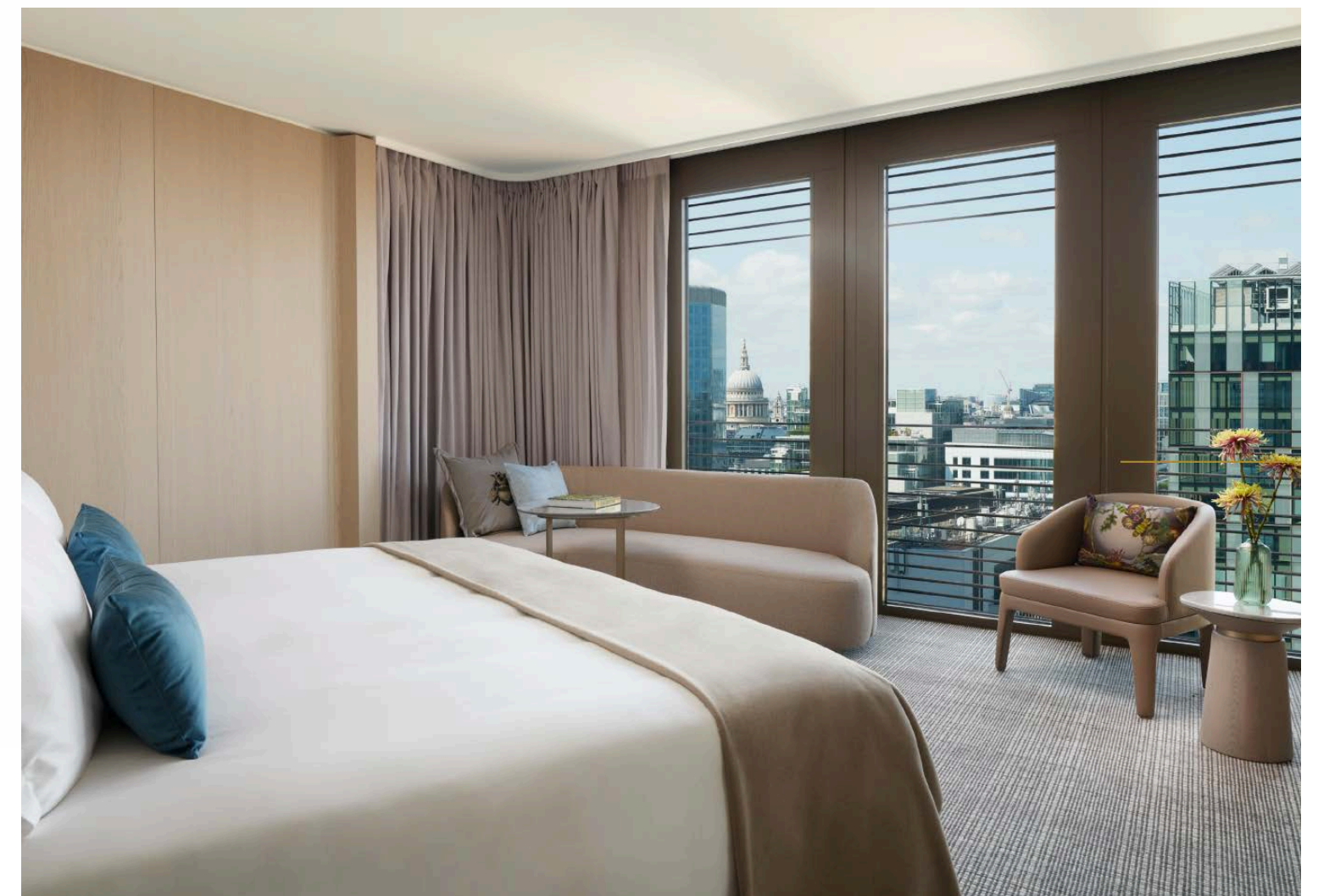
The culinary team source 95% of ingredients locally within the UK ensuring our carbon footprint is kept low, whilst all chefs' uniforms have been made entirely from recycled plastic bottles. The hotel is a "Clean Conscience" partner significantly reducing the amount of our waste.

Our roof is home to a mix of 42 native wildflowers that have been planted above the structure's tallest point, to create a sense of continuity between the hotel tower and the outdoor public spaces on the ground floor.

Please visit our website to be in-the-know of ongoing initiatives that we continually implement across the hotel.

*"Green Green roofs not only encourage urban biodiversity but they can cut carbon emissions from energy use by improving building insulation, reducing local flood risks and enhancing air quality. "*

~PLP ARCHITECTS, Architects for Pan Pacific London





## SO/ DELICIOUS

Sotogrande is where the Mediterranean and the Atlantic meet. Expect tasty bar tapas, gourmet light bites, dishes fresh from the grill, private dining, even Chef's Table experiences, as well as signature restaurants focusing on the best products from the ocean and Andaluca's eight provinces.



Ilona Lee with Jani Viswanath (Healing Lives Foundation ) at Pan Pacific London.

